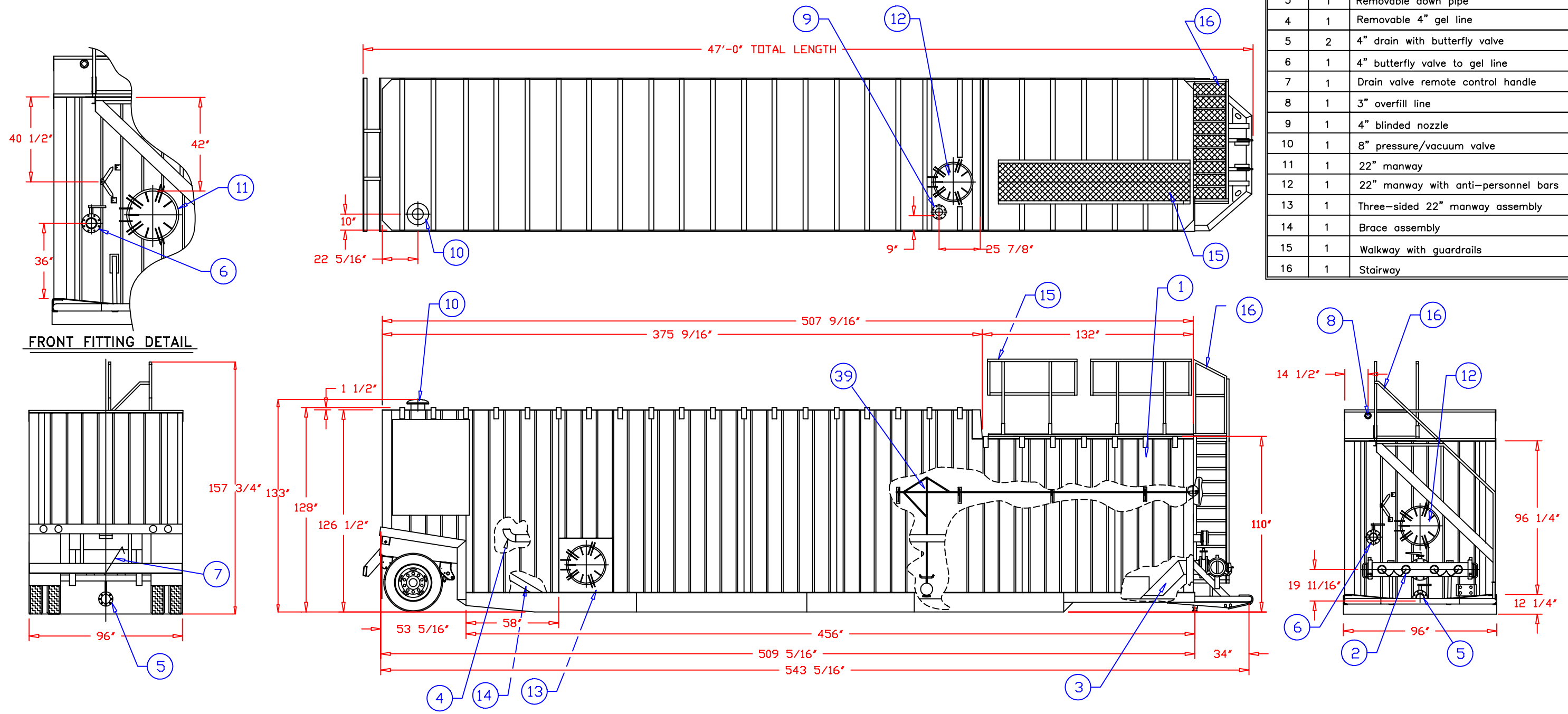


ITEM	QTY	DESCRIPTION
1	2	Corrugated wall, 1/4" thick
2	1	8" Manifold with 4-4" branch connections
3	1	Removable down pipe
4	1	Removable 4" gel line
5	2	4" drain with butterfly valve
6	1	4" butterfly valve to gel line
7	1	Drain valve remote control handle
8	1	3" overflow line
9	1	4" blinded nozzle
10	1	8" pressure/vacuum valve
11	1	22" manway
12	1	22" manway with anti-personnel bars
13	1	Three-sided 22" manway assembly
14	1	Brace assembly
15	1	Walkway with guardrails
16	1	Stairway




SPECIFICATIONS:

- 1) TANK CAPACITY: 20,790 GAL (495 BBL.)
- 2) TANK WEIGHT: 27,000 LBS.

NOTES:

1. THIS DRAWING IS A BASELINE REPRESENTATION FOR THIS MODEL TANK. VARIATIONS BETWEEN THE DRAWING AND THE ACTUAL EQUIPMENT IN THE FIELD CAN AND DO EXIST, PRIMARILY WITH APPURTENANCE LOCATIONS, SIZES AND QUANTITIES. CONSULT YOUR LOCAL BAKER REPRESENTATIVE IF SPECIFIC NEEDS EXIST.
2. THIS TANK IS TO BE TRANSPORTED WHILE EMPTY ONLY. IT IS NOT DESIGNED TO TRANSPORT LOADS.
3. MOST TANKS OF THIS TYPE HAVE AN INTERNAL LINING (COATING).

The information contained herein is proprietary to Baker Tanks and shall not be reproduced or disclosed in whole or in part, or used for any design or manufacture except when user obtains direct written authorization from Baker Tanks.						3020 OLD RANCH PARKWAY SEAL BEACH, CA 90740-2751	
G				SCALE:	SIZE	ORIGINAL DWG. DATE	
F				Do not scale	B	12JUL02	
E				DRAWN BY:	APPROVED BY:	CAT/CLASS	
D				PJB		110-1200	
C				TITLE			SHEET
B	FIXED CUTAWAYS / LINEWEIGHT	7/12/05	Z.E.R	V.E. ENTERPRISES "SINGLE STEP" FIXED AXLE TANK			1 of 1
A	Changed Title (added "Single Step")	12/1/04	PJB	DRAWING NO.			REV.
REV.	DESCRIPTION	DATE	BY	S-2-M0003-1-			B