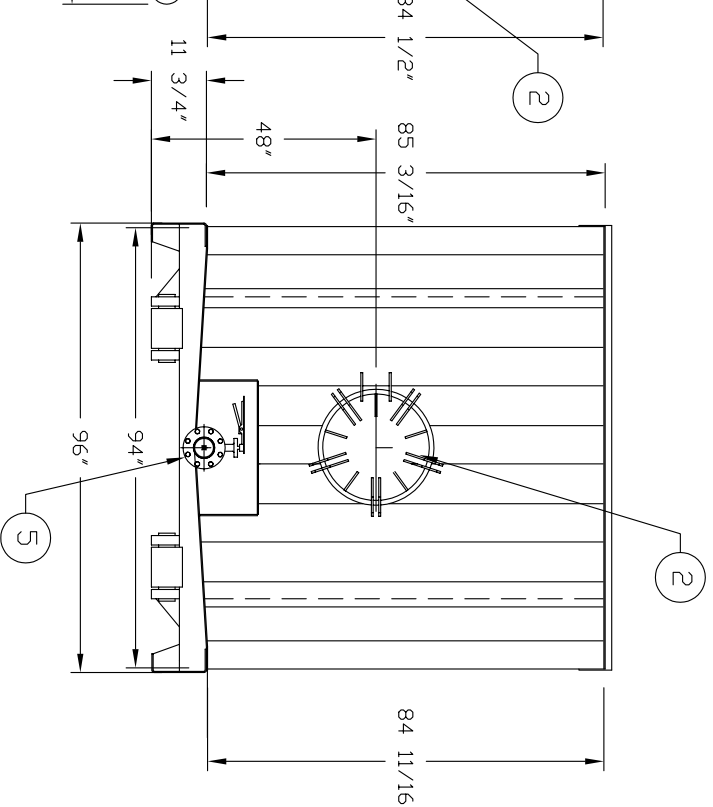
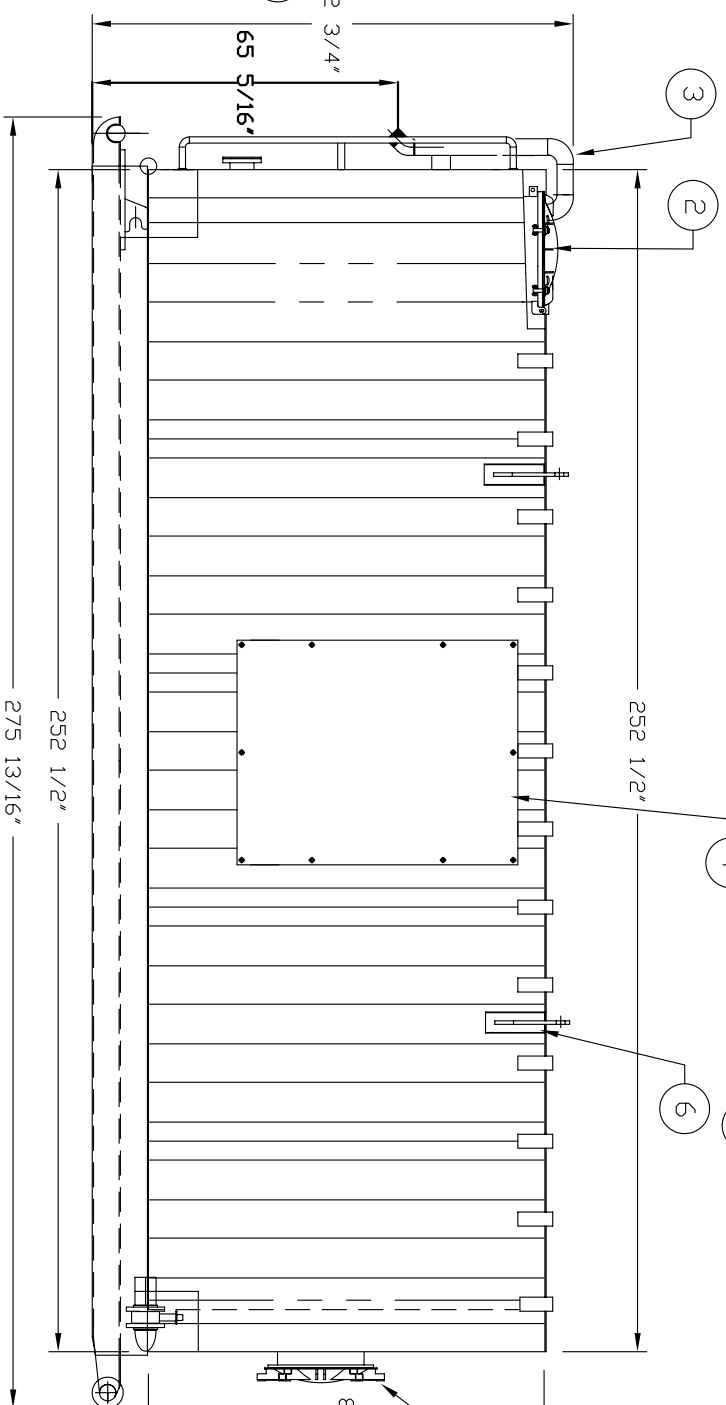
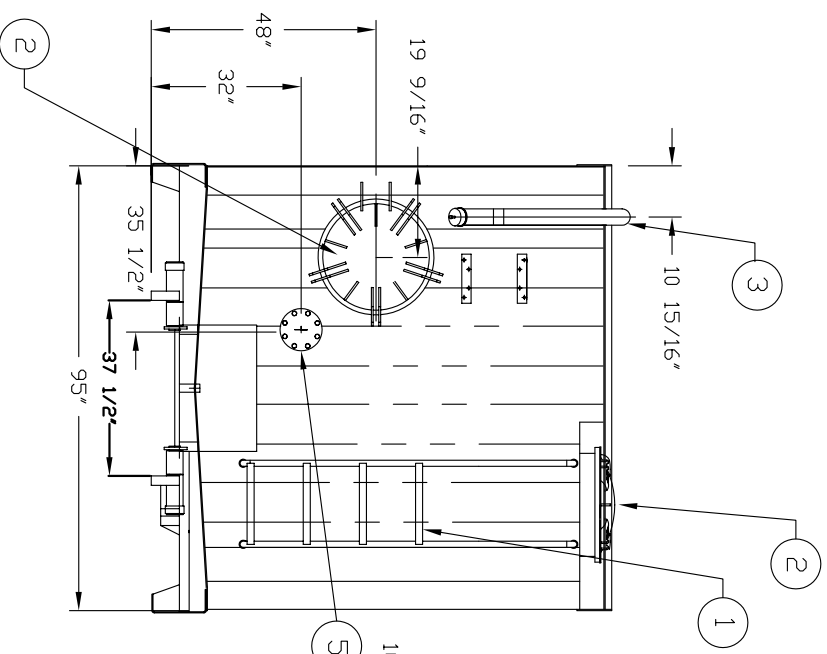


ITEM	QTY	DESCRIPTION
1	1	LADDER WITH PLATFORM
2	3	22" DIAMETER MANWAY
3	1	3" SCH. 40 FILL LINE
4	2	SIGN PLATE
5	2	4" CONNECTION
6	4	LIFTING LUG
7	1	VENT HATCH, ENARDO MOD #560 2 oz voc/4 oz press
8	15	C3x4.1 RAFTER



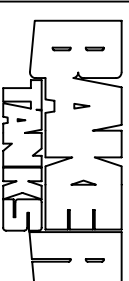
SPECIFICATIONS:

- 1) NOMINAL TANK CAPACITY: 10,000 GAL (238 BBL.)
- 2) NOMINAL TANK WEIGHT: 10,500 LBS. Δ

NOTES:

1. THIS DRAWING IS A BASELINE REPRESENTATION FOR THIS MODEL TANK. VARIATIONS BETWEEN THE DRAWING AND THE ACTUAL EQUIPMENT IN THE FIELD CAN AND DO EXIST, PRIMARILY WITH APPURTENANCE LOCATIONS, SIZES AND QUANTITIES. CONSULT YOUR LOCAL BAKER REPRESENTATIVE IF SPECIFIC NEEDS EXIST.
2. THIS TANK IS TO BE TRANSPORTED WHILE EMPTY ONLY. IT IS NOT DESIGNED TO TRANSPORT LOADS.
3. TANK IS CONSTRUCTED FROM 1/4" THICK CARBON STEEL.

The information contained herein is proprietary to Baker Tanks and shall not be reproduced or disclosed in whole or in part, or used for any design or manufacture except when user obtains direct written authorization from Baker Tanks.



3020 OLD RANCH PARKWAY
SEAL BEACH, CA 90740-2751

REV.	DESCRIPTION	DATE	BY	TITLE	DRAWING NO.	REV.
G				SCALE: Do Not Scale		
F				DRAWN BY: P.J.B.		
E				APPROVED BY: B		
D				TITLE: VE ENTERPRISES 10K TANK		
C						
B						
A	Corrected the weight	6/17/03	PJB			
					S-9-M0001-1-	

ORIGINAL DWG. DATE
15JUL02

CAT/CLASS
170-4xxx

SHEET
1 of 1

REV.
0