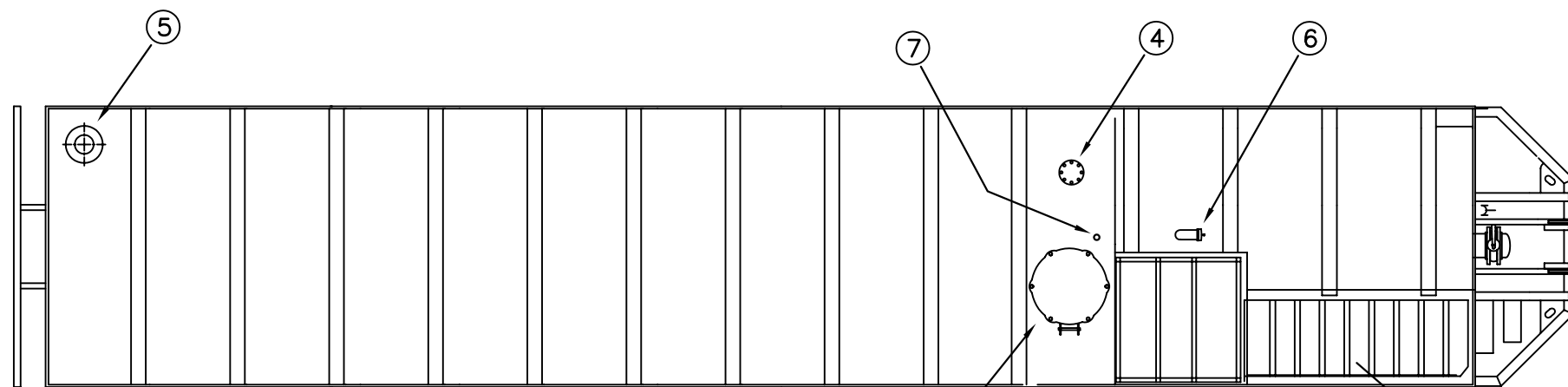
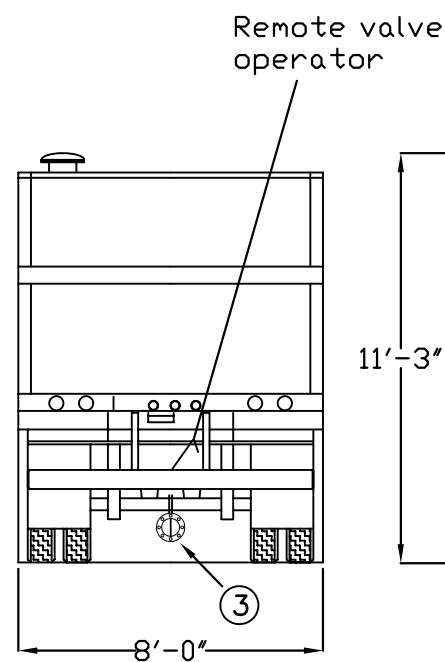


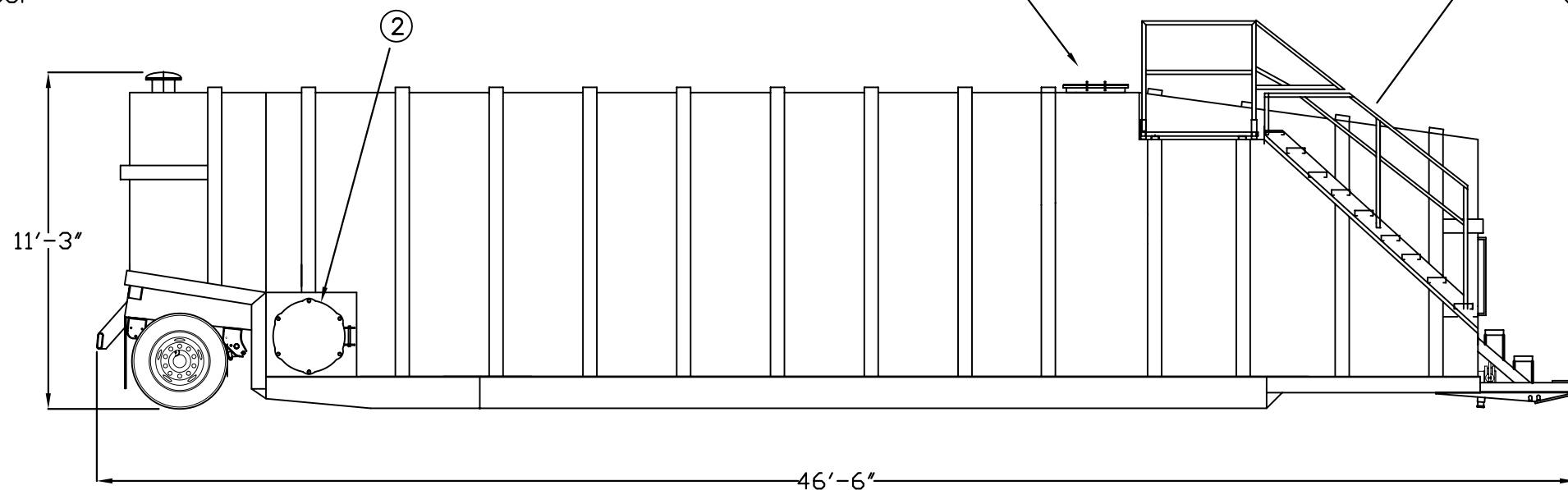
ITEM	QTY	DESCRIPTION
1	1	FRONT DRAIN ASSY 4"W/BUTTER FLY VALVE & NOZZLE
2	3	MANWAY 22" FLAT LID
3	1	DRAIN ASSEMBLY 4"W/BUTTER FLY VALVE & NOZZLE
4	1	4" FLANGED CONNECTION
5	1	PRESSURE / VACUUM RELIEF VALVE
6	1	3" FILL CONNECTION (capped)
7	1	1-1/2" COLLAR W/PLUG



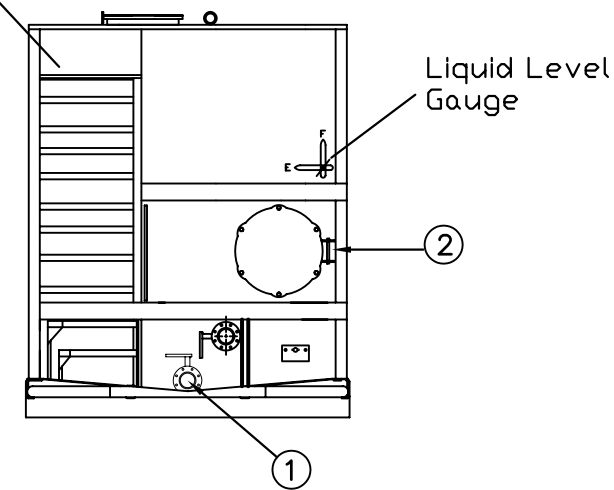
TOP VIEW



REAR VIEW



SIDE ELEVATION VIEW



FRONT VIEW

SPECIFICATIONS:

- 1) TANK CAPACITY: 21,000 GAL (500 BBL.)
- 2) TANK WEIGHT: 29,000 LBS.

NOTES:

- 1. THIS DRAWING IS A BASELINE REPRESENTATION FOR THIS MODEL TANK. VARIATIONS BETWEEN THE DRAWING AND THE ACTUAL EQUIPMENT IN THE FIELD CAN AND DO EXIST, PRIMARILY WITH APPURTENANCE LOCATIONS, SIZES AND QUANTITIES. CONSULT YOUR LOCAL BAKER REPRESENTATIVE IF SPECIFIC NEEDS EXIST.
- 2. THIS TANK IS TO BE TRANSPORTED WHILE EMPTY ONLY. IT IS NOT DESIGNED TO TRANSPORT LOADS.
- 3. MOST TANKS OF THIS TYPE HAVE AN INTERNAL LINING (COATING).

The information contained herein is proprietary to Baker Tanks and shall not be reproduced or disclosed in whole or in part, or used for any design or manufacture except when user obtains direct written authorization from Baker Tanks.



3020 OLD RANCH PARKWAY
SEAL BEACH, CA 90740-2751

G				SCALE:	NTS	SIZE	B	ORIGINAL DWG. DATE	09FEB05
F				DRAWN BY:	P.J.B.	APPROVED BY:	-	CAT/CLASS	-
E				TITLE	FRONTIER FIXED AXLE TANK			SHEET	1 OF 1
D				DRAWING NO.	S-2-M0015-1-			REV.	0
C				REV.	DESCRIPTION	DATE	BY		