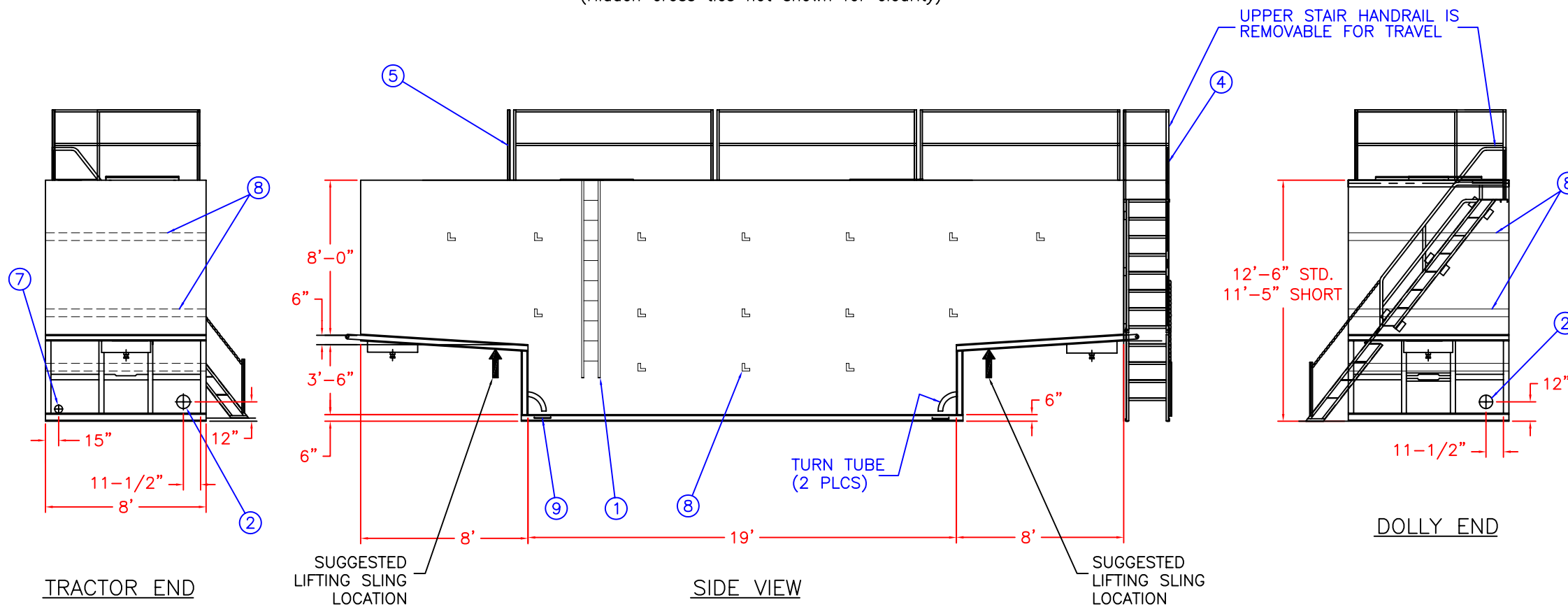


ITEM	QTY	DESCRIPTION
1	1	INTERNAL LADDER
2	2	4" BUTTERFLY VALVE
3	2	SNAP-ON DECK LID
4	1	OSHA COMPLIANT STAIRWAY & RAILS
5	1	OSHA COMPLIANT GUARD RAIL
6	2	PULL EYES FOR LOADING TANK
7	1	4" NIPPLE WITH CAP
8	17	INTERNAL CROSS TIES
9	2	12" SUMP



SPECIFICATIONS:

- TANK CAPACITY:
STD.: 500 BBL/21,000 GAL.
SHORT: 475 BBL/19,950 GAL.
- TANK WEIGHT:
STD.: 21,000-22,000 LB.
SHORT: 20,000-21,000 LB.
- MAT'L. OF CONSTRUCTION: A36 CARBON STEEL.

NOTES:

- THIS DRAWING IS A BASELINE REPRESENTATION FOR THIS MODEL TANK. VARIATIONS BETWEEN THE DRAWING AND THE ACTUAL EQUIPMENT IN THE FIELD CAN AND DO EXIST, PRIMARILY WITH APPURTENANCE LOCATIONS, SIZES AND QUANTITIES. CONSULT YOUR LOCAL BAKER REPRESENTATIVE IF SPECIFIC NEEDS EXIST.
- SOME INDIVIDUAL TANKS ARE EQUIPPED WITH BOTTOM HEATING COILS MADE OF CARBON STEEL PIPE.

The information contained herein is proprietary to Baker Tanks and shall not be reproduced or disclosed in whole or in part, or used for any design or manufacture except when user obtains direct written authorization from Baker Tanks.



3020 OLD RANCH PARKWAY
SEAL BEACH, CA 90740-2751

G				SCALE:	None	SIZE	B	ORIGINAL DWG. DATE	06MAR02
F				DRAWN BY:	A. R.	APPROVED BY:	-	CAT/CLASS	100-2XXX
E				TITLE	SAFE TOP TANK			SHEET	1 OF 1
D				REVISIONS				DRAWING NO.	S-1-M0004-1-
C				REV.	DESCRIPTION	DATE	BY	REV.	B
B	ADDED HIDDEN LINES	7/12/05	Z.E.R.						
A	REDRAWN FROM SK-013.DWG	06MAR02	A.R.						