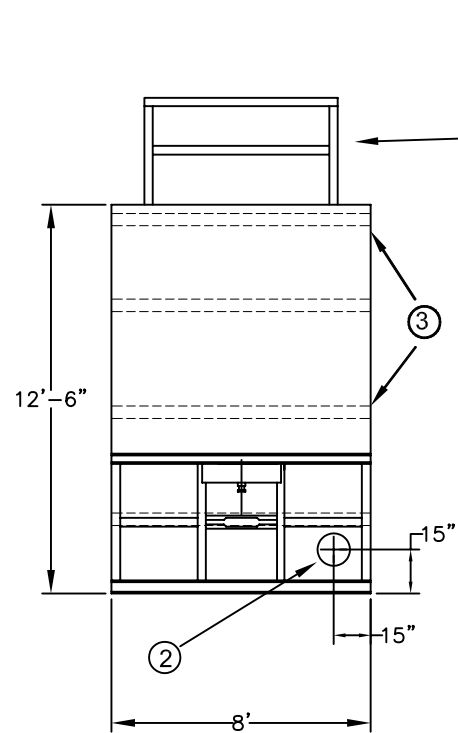
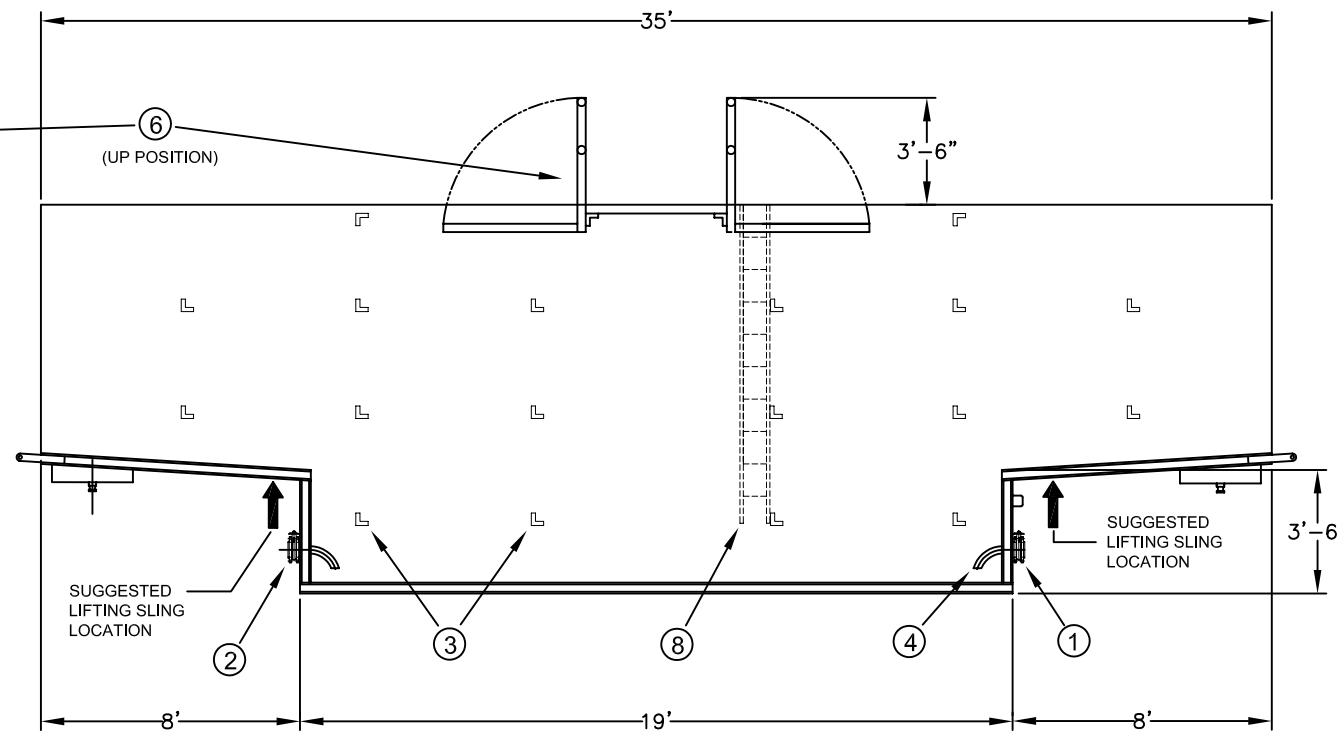


TOP VIEW

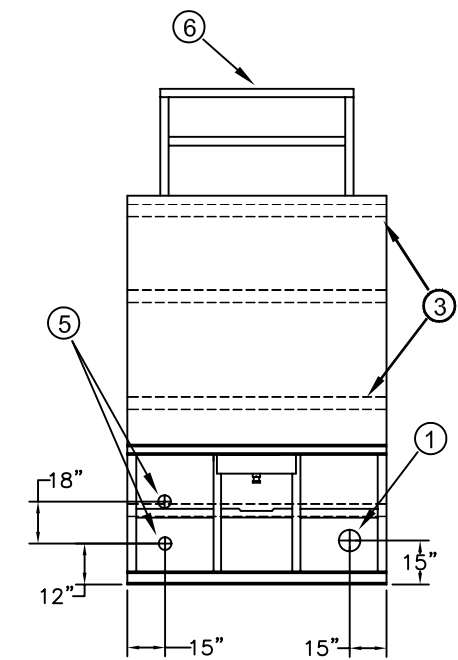
| ITEM | QTY | DESCRIPTION                            |
|------|-----|--|
| 1    | 1   | 4" Butterfly Valve (see note 1)        |
| 2    | 1   | 6" Butterfly Valve (see note 1)        |
| 3    | 20  | Internal Cross-ties                    |
| 4    | 2   | Sump Draw                              |
| 5    | 2   | 4" Diameter Capped Nipple (see note 1) |
| 6    | 2   | Catwalk Handrail (foldable)            |
| 7    | 1   | Expanded Metal Catwalk                 |
| 8    | 1   | Internal Ladder                        |



DOLLY END



SIDE VIEW



TRACTOR END

SPECIFICATIONS:

- 1) TANK CAPACITY: 500 BBL/21,000 GAL.
- 2) TANK WEIGHT: 18,000-19,000 LB.
- 3) MAT'L OF CONSTRUCTION: A36 CARBON STEEL.

NOTES:

1. THIS DRAWING IS A BASELINE REPRESENTATION FOR THIS MODEL TANK. VARIATIONS BETWEEN THE DRAWING AND THE ACTUAL EQUIPMENT IN THE FIELD CAN AND DO EXIST, PRIMARILY WITH APPURTENANCE LOCATIONS, SIZES AND QUANTITIES. CONSULT YOUR LOCAL BAKER REPRESENTATIVE IF SPECIFIC NEEDS EXIST.
2. REMOVABLE EXTERNAL LADDER (NOT SHOWN) REQUIRED TO ACCESS CATWALK.

The information contained herein is proprietary to Baker Tanks and shall not be reproduced or disclosed in whole or in part, or used for any design or manufacture except when user obtains direct written authorization from Baker Tanks.



3020 OLD RANCH PARKWAY  
SEAL BEACH, CA 90740-2751

|   |                    |         |        |           |               |              |    |                    |              |
|---|--------------------|---------|--------|-----------|---------------|--------------|----|--------------------|--------------|
| G |                    |         |        | SCALE:    | None          | SIZE         | B  | ORIGINAL DWG. DATE | 27FEB02      |
| F |                    |         |        | DRAWN BY: | A. R.         | APPROVED BY: | -  | CAT/CLASS          | 100-0XXX     |
| E |                    |         |        | TITLE     | OPEN TOP TANK |              |    | SHEET              | 1 OF 1       |
| D |                    |         |        | REV.      | DESCRIPTION   | DATE         | BY | DRAWING NO.        | S-1-M0001-1- |
| C |                    |         |        |           |               |              |    | REV.               | B            |
| B | Added Hidden lines | 7/12/05 | Z.E.R  |           |               |              |    |                    |              |
| A | Misc Dim Revs      | 2/2/05  | P.J.B. |           |               |              |    |                    |              |