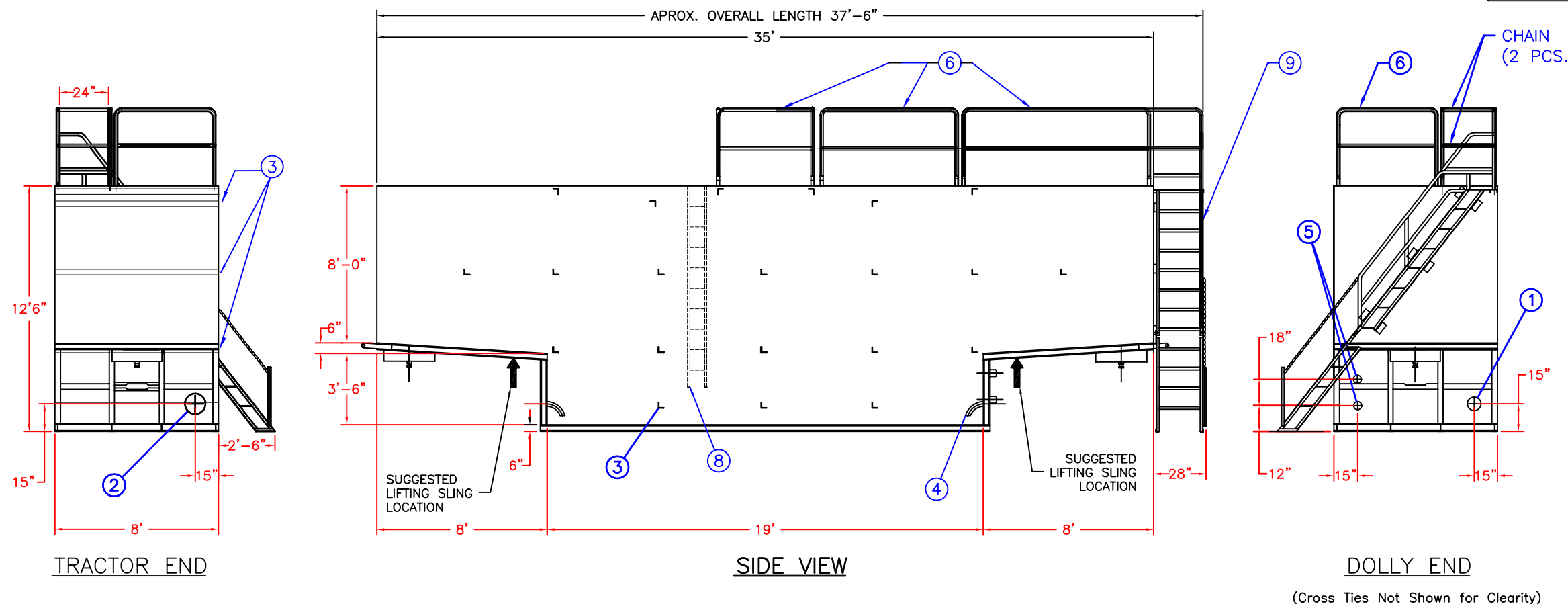


ITEM	QTY	DESCRIPTION
1	1	4" BUTTERFLY VALVE (SEE NOTE 1)
2	1	6" BUTTERFLY VALVE (SEE NOTE 1)
3	TBD	INTERNAL CROSS TIES
4	2	SUMP DRAW
5	2	4" DIA. CAPPED NIPPLE (SEE NOTE 1)
6	1 SET	OSHA COMPLIANT FOLDABLE CATWALK HANDRAIL
7	1	EXPANDED METAL CATWALK
8	1	INTERNAL LADDER
9	1	OSHA COMPLIANT STAIRWAY AND RAILS



- SPECIFICATIONS:
- 1) TANK CAPACITY: 500 BBL/21,000 GAL.
 - 2) TANK WEIGHT: 18,000-19,000 LB.
 - 3) MAT'L OF CONSTRUCTION: A36 CARBON STEEL.

NOTES:

1. THIS DRAWING IS A BASELINE REPRESENTATION FOR THIS MODEL TANK. VARIATIONS BETWEEN THE DRAWING AND THE ACTUAL EQUIPMENT IN THE FIELD CAN AND DO EXIST, PRIMARILY WITH APPURTENANCE LOCATIONS, SIZES AND QUANTITIES. CONSULT YOUR LOCAL BAKER REPRESENTATIVE IF SPECIFIC NEEDS EXIST.

The information contained herein is proprietary to Baker Tanks and shall not be reproduced or disclosed in whole or in part, or used for any design or manufacture except when user obtains direct written authorization from Baker Tanks.

BAKER TANKS 3020 OLD RANCH PARKWAY
SEAL BEACH, CA 90740-2751

G				SCALE:	None	SIZE	B	ORIGINAL DWG. DATE	12MAR02
F				DRAWN BY:	A. R.	APPROVED BY:	-	CAT/CLASS	100-0700
E				TITLE	OPEN ACCESS TANK			SHEET	1 OF 1
D				DRAWING NO.	S-1-M0005-1-			REV.	A
C				REV.	DESCRIPTION	DATE	BY		
B									
A	ADDED HIDDEN LINES	7/12/05	Z.E.R						