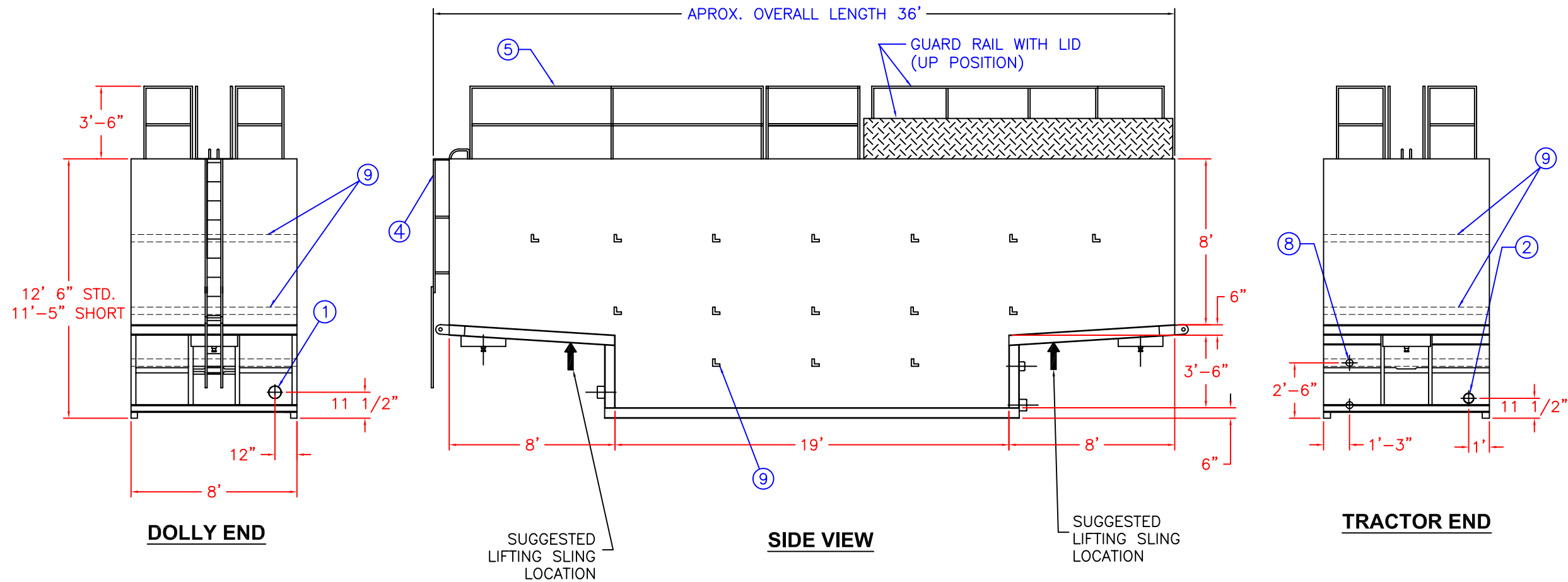



ITEM	QTY	DESCRIPTION
1	1	6" BUTTERFLY VALVE
2	1	4" BUTTERFLY VALVE
3	4	15'X3' ACCESS HATCH, C'BALANCED
4	1	EXTERNAL LADDER
5	1	OSHA COMPLIANT GUARD RAIL
6	2	PULL HANDLES FOR LIFTING LID
7	2	PULL EYES FOR LOADING TANK
8	2	4" NIPPLE WITH CAP
9	17	INTERNAL CROSS TIES



**SPECIFICATIONS:**

- TANK CAPACITY:**  
STD.: 500 BBL/21,000 GAL.  
SHORT: 475 BBL/19,950 GAL.
- TANK WEIGHT:**  
STD.: 21,000-22,000 LB.  
SHORT: 20,000-21,000 LB.
- MAT'L. OF CONSTRUCTION:** A36 CARBON STEEL.

**NOTES:**  
1. THIS DRAWING IS A BASELINE REPRESENTATION FOR THIS MODEL TANK. VARIATIONS BETWEEN THE DRAWING AND THE ACTUAL EQUIPMENT IN THE FIELD CAN AND DO EXIST, PRIMARILY WITH APPURTENANCE LOCATIONS, SIZES AND QUANTITIES. CONSULT YOUR LOCAL BAKER REPRESENTATIVE IF SPECIFIC NEEDS EXIST.

The information contained herein is proprietary to Baker Tanks and shall not be reproduced or disclosed in whole or in part, or used for any design or manufacture except when user obtains direct written authorization from Baker Tanks.						3020 OLD RANCH PARKWAY SEAL BEACH, CA 90740-2751	
G				SCALE: NOT TO SCALE	SIZE B	ORIGINAL DWG. DATE 28FEB02	
F				DRAWN BY: A. R.	APPROVED BY: -	CAT/CLASS 100-3XXX	
E				TITLE EASY ACCESS TANK (LADDER VERSION)		SHEET 1 OF 1	
D				REV.	DESCRIPTION	DATE	BY
C				A	ADDED HIDDEN LINES AND TEXT	7/12/05	Z.E.R.
B				DRAWING NO. S-1-M0003-1-		REV. B	