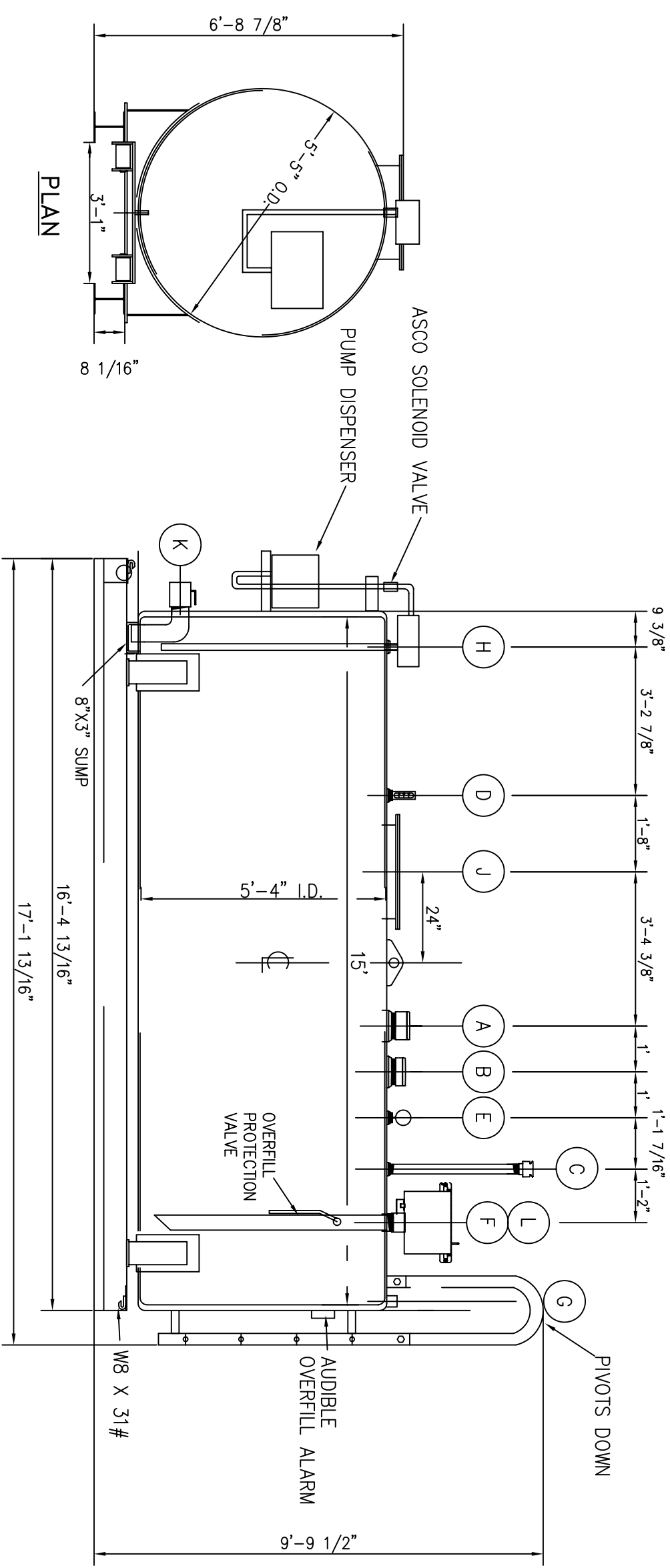


- (A) 6" PRIMARY EMERGENCY VENT
- (B) 6" SECONDARY EMERGENCY VENT
- (C) 2" VENT
- (D) KRUEGAR VOLUME VISUAL ALERT
- (E) MORRISON BROS. CLOCK GAUGE W/ AUDIBLE ALARM AT 85%
- (F) 5 GALLON SPILL CONTAINMENT W/ DRAIN BACK
- (G) ANNULAR MONITOR SPACE
- (H) 1/3 HP SUBMERSIBLE PUMP
- (I) MANWAY
- (J) 3" BALL VALVE
- (K) CLAY & BAILEY F30 VERTICAL FLOAT OVERFILL PROTECTION VALVE
- (L)



GENERAL NOTES:

FABRICATION PER UL-142 & UL-2244

LABEL REQ'D. YES

DESIGN PRESSURE - ATM.

DESIGN TEMPERATURE - AMB.

SHOP TEST 3.0 - 5.0 PSI W/SOAP SUDS

MATERIAL FOR PRIMARY SHELL SA-36

MATERIAL FOR PRIMARY HEADS SA-36

MATERIAL FOR SECONDARY SHELL SA-36

MATERIAL FOR SECONDARY HEADS SA-36

GASKETS VEGETABLE FIBER

SAND BLAST INTERIOR: SSPC-SP-6

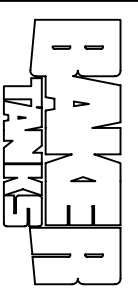
SAND BLAST EXTERIOR: SSPC-SP-6

PAINT INTERIOR: CARBOLINE 187

PAINT EXTERIOR: CARBOLINE 890

EST. WT EMPTY: 7,737 lbs.

The information contained herein is proprietary to Baker Tanks and shall not be reproduced or disclosed in whole or in part, or used for any design or manufacture except when user obtains direct written authorization from Baker Tanks.



3020 OLD RANCH PARKWAY
SEAL BEACH, CA 90740-2751

SCALE:	Do Not Scale	SIZE	B	ORIGINAL DWG. DATE	10SEP02
DRAWN BY:	P.J.B.	APPROVED BY:	-	CAT/CLASS	187-0250
TITLE	2500 GALLON DOUBLE WALL FUEL STORAGE TANK		SHEET	1 OF 1	
DRAWING NO.	S-9-M0008-1-		REV.	0	
REV.	DESCRIPTION	DATE	BY		
A	Added note	6/13/03	PJB		

NOTES:

(A) THIS DRAWING IS A BASELINE REPRESENTATION FOR THIS MODEL TANK. VARIATIONS BETWEEN THE DRAWING AND THE ACTUAL EQUIPMENT IN THE FIELD CAN AND DO EXIST, PRIMARILY WITH APPURTENANCE LOCATIONS, SIZES AND QUANTITIES. CONSULT YOUR LOCAL BAKER REPRESENTATIVE IF SPECIFIC NEEDS EXIST.